



ESSENCE

BRIGHTON

Luxury Redefined

66-70 Black St, Brighton





01.	Vision
02.	Architecture and Interiors
03.	Location
04.	Design
05.	Amenities
06.	Collaborators

01. Vision





Welcome to the future
of prestige living.

The Kervale Group is proud to present – ESSENCE.

Located in beautiful Brighton, Victoria, and featuring twenty-two exclusive residences, these carefully curated homes have been designed to appeal to owners who are seeking that intersection between spacious, contemporary design and comfortable, luxurious liveability.

The architecture, design and amenities are unlike any other in Melbourne. Designed by the renowned Bruce Henderson Architecture & Interiors and in collaboration with Jack Merlo landscape architects, ESSENCE promises something for every discerning resident.



ESSENCE is a building responding to the needs of tomorrow. The homes have been deliberately spread across two separate wings, thereby offering residents a quieter, more spacious, and more intimate day-to-day living experience. A central courtyard entrance between each of the wings creates a distinct sense of welcome and street presence. ESSENCE brings a beautiful new statement to Black Street in Brighton and is an exciting and respectful architectural structure that promotes the natural “rhythm” of the street.

Luxury is in each detail.
Hubert de Givenchy



02. Architecture and Interiors





Delivering functional and elegant design solutions.

Graham Morrison is the architect responsible for the remarkable and beautiful design of ESSENCE. Graham not only takes responsibility for all aspects of the design output at Bruce Henderson Architects, but also takes an active role throughout the life of all of his projects. His input, insight and beautiful touch is present in every aspect of ESSENCE, Brighton.

Graham has been a Corporate Director of the Bruce Henderson Practice since 1986. As a Corporate Director, Graham is not only intimately involved in all aspects of BHA projects, but he also plays an important role in the day-to-day administration in the office. He has extensive knowledge of high rise and medium density residential design including resorts and water-based architecture.

His recent projects include Hyatt Place Hotel Development, Mr McCracken Restaurant and Bar and the Australian Events Centre all at Essendon Fields.

Graham has a portfolio of luxury apartment and townhouse developments in Toorak, Armadale, and Brighton and luxury homes and Villas in Flinders and the Mornington Peninsula.

Also prominent in commercial office developments Graham has projects in inner-city Melbourne and Essendon Fields. He is also the Head of our projects in Vietnam and Asia currently undertaking a 45 level twin tower development in Hanoi and has had extensive experience on projects in Dubai.

A stylized, handwritten signature of Graham Morrison in white ink.

Graham Morrison
Managing Director & Corporate Director
Bruce Henderson Architects



Connections and meaning through thoughtful design.

Charlotte Henderson leads the design team at Bruce Henderson Interiors, and has been involved in some of the beautiful spaces in the ESSENCE project.

Throughout her many years at BHA, Charlotte has demonstrated an ability to think logically in performing and achieving results in line with her client's vision. She manages each project phase, striving to incorporate the principals of optimisation, rationalisation and efficiency into all her projects.

Charlotte's reputation within the building industry (with a focus on multi-residential, residential and commercial projects) is matched by the quality of the final design she achieves for her clients. Her passion for design provides a refined and a well-considered design aesthetic, producing high-end luxury design alongside intuitive and pragmatic spaces.

Charlotte's design principles are that of simplicity, quality, and timelessness. She embraces the challenge of each individual project, and prides herself on her ability to resolve complex design issues to create a distinguished result for every client.

Charlotte Henderson
Director of Interiors
Bruce Henderson Architects



Rosie Harris has been the lead interior designer of ESSENCE, Brighton. She has been heading up the team which has created the ESSENCE design aesthetic, and which has brought their remarkable expertise to this project. Rosie has worked with, and inspired her team to connect the vision of the architects and the developers with the needs of the ESSENCE homeowners. She has been able to do this, as she brings to the project many years of experience as an Interior Designer, coupled with a sense of understated and sophisticated luxury and comfort that homeowners expect in a project like ESSENCE, Brighton.

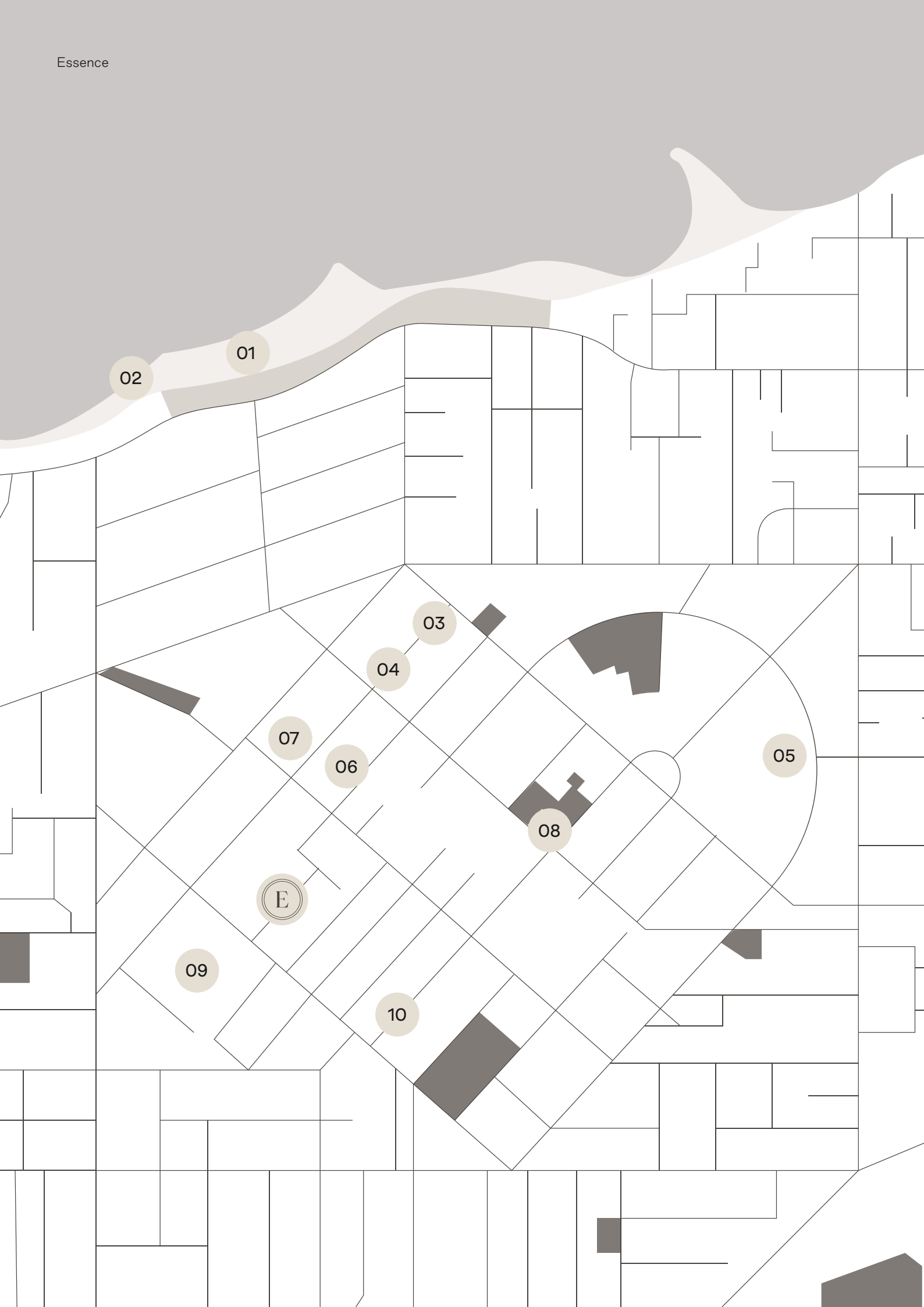
Rosie is a result-driven Interior Designer with experience in high-end residential interiors and commercial planning. She has been part of the Bruce Henderson Interiors team for the last three years, to which she brings her passion for a well-considered design aesthetic and an emphasis on the clients' vision.

The team at Bruce Henderson Architects work together and produce beautiful results. As part of this team, Rosie's priority is to provide her clients with a holistic concept that delivers high-end, luxurious interiors. Rosie is a perfectionist whose design approach is to achieve simplicity, balance, and a sense of timeless elegance.

Rosie Harris
Interior Designer
Bruce Henderson Interiors

03. Location





Situated right in the heart of Brighton.

01. **Brighton Beach**
Esplanade, Brighton VIC 3186
02. **Brighton Bathing Boxes**
Esplanade, Brighton VIC 3186
03. **Pantry**
1 Church St, Brighton VIC 3186
04. **Waterfront**
25 Church St, Brighton VIC 3186
05. **Firbank Grammar School**
51 Outer Cres, Brighton VIC 3186
06. **Middle Brighton Station**
07. **Half Moon**
120 Church St, Brighton VIC 3186
08. **Brighton Library**
14 Wilson St, Brighton VIC 3186
09. **Billilla Historic Mansion Epicure**
26 Halifax St, Brighton VIC 3186
10. **Epworth Brighton**
85 Wilson St, Brighton VIC 3186



I think ESSENCE is located in one of the best locations in Brighton if you want convenience. It is only a short walk to restaurants, the train station, and the shopping on Church Street.

Graham Morrison
Managing Director & Corporate Director

04. Design





Beautiful design and exciting spaces.

Creating iconic interior design and layout for each of the twenty-two state-of-the-art apartments, as well as the stunning penthouses has been the role of the Bruce Henderson Interiors team, who were strongly influenced by the external facade and remarkable architectural spaces of the building. Their aim was to curate an interior experience that would be timeless and elegant, and bring an understated sense of contemporary design to each space.

The design team have made each room and space within ESSENCE something very special. They have created a sense of style and sophistication by using a clean, neutral palette throughout the building, while at the same time adding modern, exciting touches with natural stone, high-quality joinery, tapware, lighting and appliances such as VZUG and Liebeher.





Expansive and luxurious penthouses.

The ESSENCE penthouses are some of the most considered and elegant residences available in Victoria today. These homes are a revolution in contemporary design and everyday, modern living, featuring secure lift access to your front door and up to the rooftop entertaining area and swimming pool. The expansive interior layout is designed to celebrate and embrace open space, while at the same time creating comfortable areas for privacy. The sense of scale and liveability in an ESSENCE penthouse is unsurpassed.





There are four, high-quality penthouses in the ESSENCE complex. Their sizes range from 200sqm to 400sqm, plus external areas. I don't know of any other developments in the area that have exclusive rooftop pools, or which have direct access from their apartment to the rooftop via a beautiful sculptural staircases.

I just don't know that it exists.

Graham Morrison
Managing Director & Corporate Director



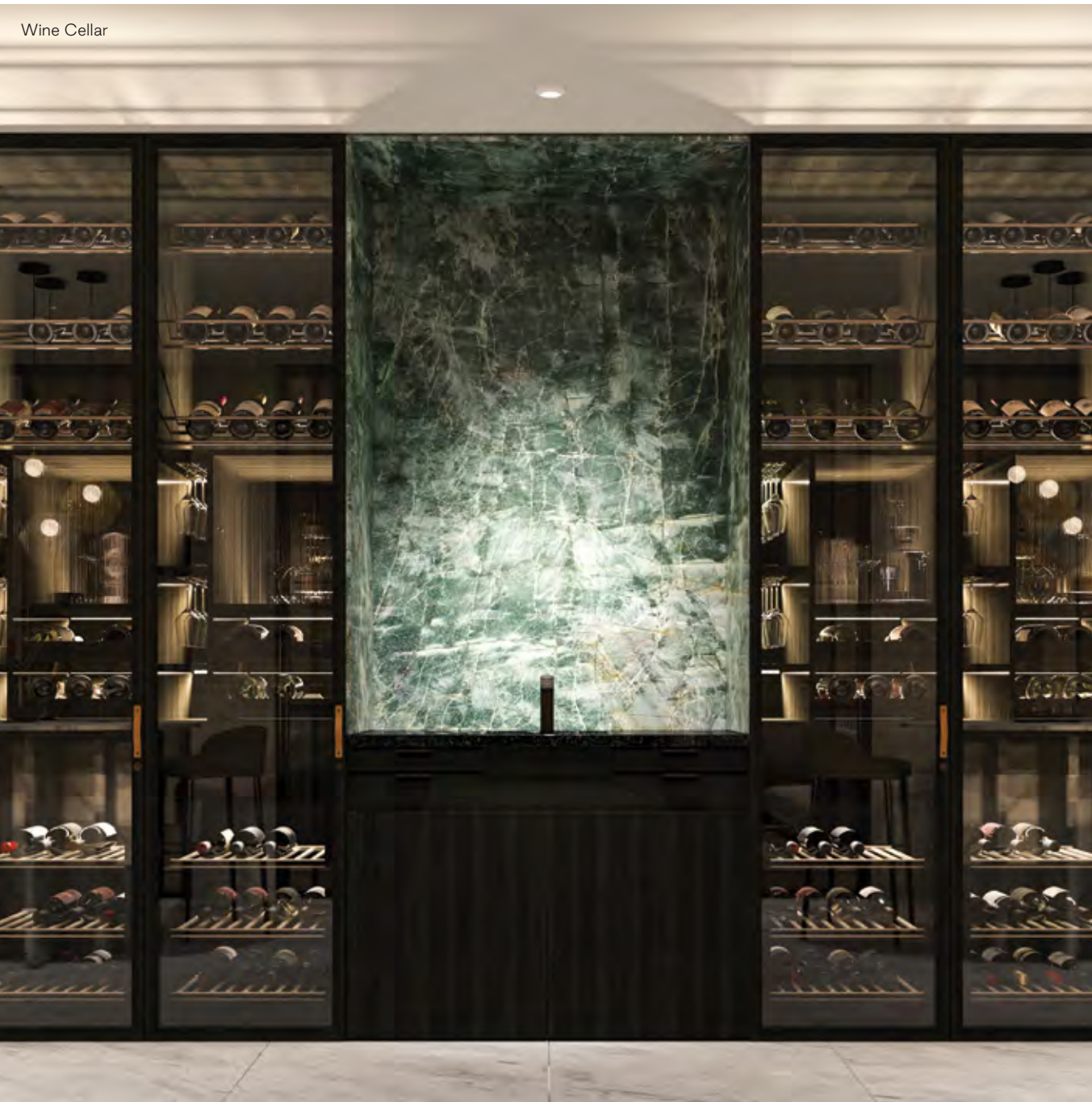






05. Amenities





Future-focused and
impressive amenities.

There is more than meets the eye with ESSENCE, with its many distinguishing features and amenities. Located beneath the ground floor are a secluded and sophisticated set of amenities to replenish and recharge the senses. This space includes a wine cellar, lounge area, private dining room, kitchenette, billiards table, gym and yoga studio. In the parking area, owners can make use of further amenities such as the electric vehicle charging points, pet grooming facilities, bicycle storage, golf club lockers, and a car washing station. The location of ESSENCE also means that most conveniences are within easy walking distance

Welcome to the future of prestige living.



Private Function Space







06. Collaborators



KERVALE

Developer

Kervale is a proudly Australian, boutique property developer, driven to deliver remarkable spaces for discerning clients.

Kervale recently built and opened their head office on Bay Street in Brighton. This space offers a chance for clients to view new projects and to connect with the Kervale team.

Leveraging decades of hard-earned market insight, Kervale ensures that each project is carefully tailored to maximise comfortable living and a sense of community, while never sacrificing quality or our commitment to environmentally responsible building practices.

The team at Kervale are proud to collaborate with some of the industry's leading architects, designers and builders. Our team is relationship focused and strives to ensure that our connection to our products and clients is unmatched in Australia.

Bruce Henderson Architects was established in 1976 as a specialist commercial architecture practice. Today, with offices in Melbourne, London and Hanoi, BHA has grown to become a highly diversified design company responsible for impressive projects around the world.

BHA has built an enviable wealth of experience in all aspects of building design, planning and development for private, corporate, institutional, government, national and international clients. Its diverse portfolio includes projects across residential, commercial, retail, health, hotel, hospitality, tourism, transport, aviation and infrastructure sectors.

The practice's staff of 50 includes architects, space planners and interior designers working in design, construction and management divisions. This structure allows BHA to inject specialist experience both upstream and downstream from conventional points in the design process, thus ensuring a consistently high quality on every project.

Founder Bruce Henderson, still at the helm, remains as passionate today for the business he began more than 40 years ago, and for delivering functional and elegant design solutions that meet the needs of evolving cities.

Bruce Henderson Architects
Architects & Interior





Jack Merlo

Landscape Architect

Following several high profile awards including a Gold Medal win at the RHS Chelsea Flower show in 2005, Jack launched his successful landscape architecture studio. With his attention to detail, and his highly considered designs to suit a wide range of private house styles in Melbourne's most established suburbs, Jack's reputation soon grew along with the size of his South Yarra studio.

Jack enjoys close working relationships with many leading architects and developers, and is highly sought after as a partner on high-end, multi-residential projects. In recent years he has designed landscapes that range from private courtyard gardens to expansive rooftop lounges and many other innovative outdoor spaces.

Jack Merlo takes pride in bringing a unique architectural approach to landscape design, creating spaces that people will appreciate for years to come. Each new project is an individual and considered response to the vision of his client, bringing an ordered and organic form to the built environment.

Luxury Redefined

66-70 Black St, Brighton



KERVALE



MARKSCON

JACK
MERLO

LBD STUDIOS



ESSENCE

BRIGHTON